

The Saint Cecilia Music Book



Music for Lodge and Festive Board

Saint Cecilia Music Book

Please do not Eat this music

Opening Ode



Hail Eternal by whose aid
All created things are made
Heav'n and earth Thy vast design
Hear us Architect Divine!

May our work begun in Thee
Ever blest with order be
And may we when Labours cease
Part in harmony and peace

By Thy glorious Majesty
By the trust we place in Thee
By the badge and mystic sign
Hear us Architect Divine!

So Mote it be.

Closing Ode



Now the evening shadows closing
Warn from toil to peaceful rest
Mystic arts and rites reposing
Sacred in each faithful breast.

God of Light whose love unceasing
Doth to all Thy works extend
Crown our Order with Thy blessing
Build, sustain us to the end.

Humbly now we bow before Thee
Grateful for Thine aid Divine
Everlasting power and glory
Mighty Architect be Thine.

So mote it be.

The Master's Song

As sung in Sussex

J.Randle Fletcher

F C7 Dm B^b F/C C7 F

This

F C7 F C7

world is so hard and so sto ny, — That if a man is to get through — He

F C7 F G7 C7

need have the cour age of Nel son, — And plen — ty of job's pat ience too, — But a

C7 F Gm C7 F

man who is kind to a no ther, And cheer ful ly helps him a long, — God

F Gm F7/A B^b F/C C7 F

bless such a man and a bro ther, And here's to his health in a song. —

F/A B^b G/B C A/C[#] Dm C7/E

Here's to his health, here's to his health, here's to his health in a song, — And

F B^b C7 F F C7 Dm B^b F/C C7

here's to his health in a song. —

F F C7 F F C7

This life is as cheer less as win ter, To those who are cold in the
clouds that in sun shine are o pen, And sil ver'd by light pass ing

C7 F C7 F

heart. — But the man who is warm in his nat ure, Bids
through, — So — men who are gen' rous in spi rit, Are

win — ter for ev er de part, — The ground that he treads on will
 bless'd — by the good deeds they do, — There's noth ing like help ing a

blos som, Till beau ties a round him shall throng, — God bless such a man and a
 noth er, For get ting ones own self a long, — Who does this is tru ly a

bro ther, And here's to his health in a song. — Here's to his health,
 bro ther, And here's to his health in a song. — To Coda

Here's to his health, Here's to his health in a song — And here's to his health in a

song. — D.S. al Coda

As

⊕ Coda

song.

The Master's Song

(London)

Piano introduction in 3/4 time. The music begins with a *mf* (mezzo-forte) dynamic. It features a series of chords in the right hand and a steady eighth-note bass line in the left hand. The tempo is marked *rall.* (rallentando) and then *a tempo* (returning to the original tempo).

{ : d' | t _ : - l : t _ l | s _ : - f : m _ r | m : d : | : : d | f _ : - m : f | l : t : l }

This world is so hard... and so sto - ny That if a man is to get

mf *p*

The first system of the song. The vocal line is in the treble clef, and the piano accompaniment is in the bass clef. The lyrics are "This world is so hard... and so sto - ny That if a man is to get". The piano part features a steady eighth-note bass line and chords in the right hand. The dynamics are *mf* (mezzo-forte) and *p* (piano).

{ | s _ : - : | : : d' | t _ : - l : t _ l | s _ : - f : m _ r | m : d : | : : m | s _ : d _ : - t _ }

through He need... have the cou - rage of Nel-son And plen-ty of

mf

The second system of the song. The vocal line is in the treble clef, and the piano accompaniment is in the bass clef. The lyrics are "through He need... have the cou - rage of Nel-son And plen-ty of". The piano part features a steady eighth-note bass line and chords in the right hand. The dynamic is *mf* (mezzo-forte).

{ | l _ s _ : f e _ s _ : l _ t _ | d : : | : : | : : | : : | : : | : : | : : | : : | : : }

Job's pa - tience too But a

f.C.

The third system of the song. The vocal line is in the treble clef, and the piano accompaniment is in the bass clef. The lyrics are "Job's pa - tience too But a". The piano part features a steady eighth-note bass line and chords in the right hand. The dynamic is *f.C.* (for Cello).

man who is kind to a - no - ther And cheer - ful - ly helps him a -

dolce

- long God bless such a man and a Bro - ther And

accel. cresc. ff

here's... to his health in a song And here's to his health,...

p dolce

here's to his health,.... And here's... to his health in a song. *Repeat in Chorus.*

cresc. ff p

2. This life..... is as cheer - less as win - ter, To those who are
 3. As clouds that in sun - shine are o - pen, And sil - ver'd by

cold in the heart, But the man who is warm.... in his
 light pass-ing through, So men who are gen - 'rous in

na-ture Bids win - ter for ev - er de - part.
 spi-rit Are blessd by the good deeds they do.

The ground that he treads on will blossom,
 There's no - thing like help - ing an - other,

dolce.

|| : :1 | s : - . f : m . r | d . r : m : - . m | 1 : - : | : :1 }

Till beau - ties a - round him shall throng, God
For - get - ting one's own self a - long Who

accel.

|| r : fe : - . l | s : m : - . d | f . l : - : | : : d' | t : - . l : t . l }

bless such a man and a Brother,
does this is tru - ly a Brother, And here's to his

cresc. *ff*

|| s : - : l . t | d' : - : | : || d | m : m : m | m . f : s : | l : l : l }

health in a song. And here's to his health, here's to his

p *cresc.*

|| l . t : d' : d' | t : - . l : t . l | s : - : l . t | d' : - : | : ||

health And here's to his health in a song. *Repeat in Chorus.*

ff *p*

Festive Board Songs

‘Worthy’

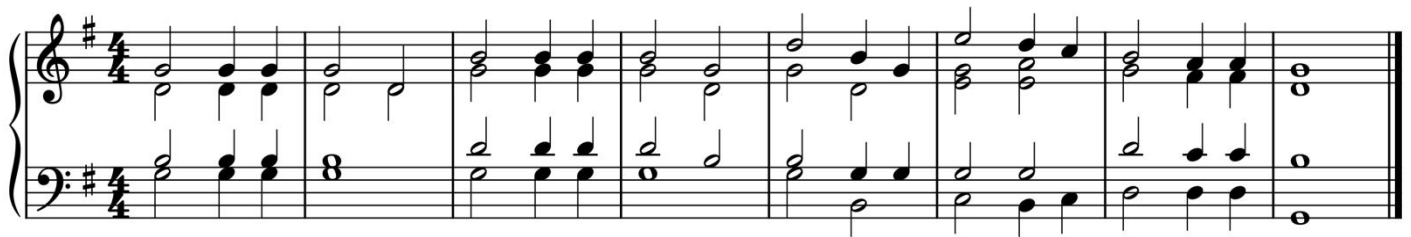
The D.C. calls “Worthy” after the J.W.’s toast. The song is sung three times, each time getting much faster until it is almost impossible to sing!



Worthy masons all,
Worthy masons all.
The kin and the craft,
The mystic art.
Worthy masons all.

‘Prosper’

The D.C. calls “Prosper” after the S.W.’s toast. There are three verses, each verse getting much faster until it is almost impossible to sing!



Prosper the art.	Prosper the man.	Prosper his lodge.
Prosper the art.	Prosper the man.	Prosper his lodge.
Join in accordance and	Join in accordance and	Join in accordance and
Prosper the art.	Prosper the man.	Prosper his lodge.

'Peace'

The D.C. calls "Peace" after the I.P.M.'s.'s toast. The song is sung three times, each time getting much faster until it is almost impossible to sing!



Peace, love and harmony.

Let's join in harmony.

Peace, love and harmony.

Let's join in harmony.

Peace, love and harmony.

Let's join in harmony.

So sing we all!

So sing we all!

Grace

mf

For these and all Thy mer - cies giv en, We bless and praise Thy name, O Lord; May we re ceive them with thanks - giv - ing, Ev - er

mf

trust - ing in Thy Word: To Thee a - lone be hon - our, glo - ry Now and hence - forth for ev er - more. A - men.

f *dim.* *pp* *mf*

f *dim.* *pp* *mf*

The Nine o'Clock Hymn

This hymn is sung in the key of Eb as it's the only key with enough working notes the Queens Road piano can muster!



Architect in thy great mercy	When in sorrow, when in danger	Thou who art Supreme in Power
Hear our evening Prayer.	When in loneliness;	Over land and sea.
Keep our Brethren who are absent	In Thy love look down & comfort	Bless them, save them, guide them, keep them
'Neath thy care.	Their distress.	Near to thee.
		<i>A-men.</i>

In any other masonic centre this hymn can be sung in the key of G as below.



Absent Brethren

The piano accompaniment for 'Absent Brethren' is written in G major (one sharp) and 4/2 time. It consists of three systems of music. The first system has 8 measures, the second has 8 measures, and the third has 8 measures. The melody is primarily in the right hand, often using chords and moving lines, while the left hand provides a steady harmonic foundation with chords and occasional moving lines. The piece concludes with a final cadence in the third system.

O architect of love and power
 Our Brethren shield in danger's hour
 From rock and tempest fire and foe
 Protect them whereso'er they go
 Thus evermore shall rise to thee
 Glad hymns of praise from land and sea

Absent Brethren

To be sung at 9 o'clock

Stephanos H. W. Baker

The vocal and piano accompaniment for 'Absent Brethren' is written in G major (one sharp) and 4/2 time. It consists of two systems of music. The first system has 8 measures, and the second has 8 measures. The melody is primarily in the right hand, often using chords and moving lines, while the left hand provides a steady harmonic foundation with chords and occasional moving lines. The piece concludes with a final cadence in the second system.

mf 1 Ar - chi - tect for Thy pro - tec - tion Now we hum - bly pray;
 Guard and com - fort all our Brethren Far a - way.

Grant that we, in true remembrance
 May not be remiss;
 Let them know that in this hour 'tis
 Them we miss

If their absence be through wandering
 Or through grief or pain,
 Bless them, heal them, bring them to us
 Safe again.